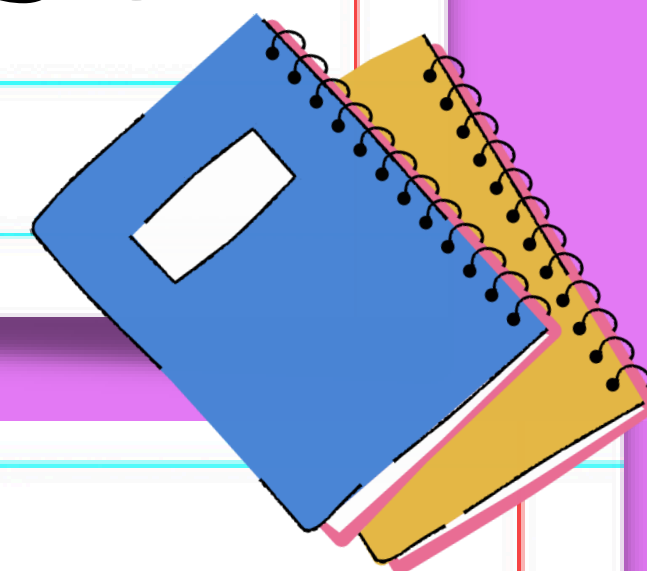


# Safeguarding Newsletter – Sept 2024



## Welcome Back

Welcome to the first safeguarding newsletter of a brand-new academic year! In particular, welcome to our new families. As we start the year I would like to remind you all that at Bredbury St Marks Primary School, safeguarding and promoting the welfare of children is everyone's responsibility and our top priority. Everything that we do has the children at its centre. Their wellbeing, their safety, their achievement, their happiness underpins every decision we make. Often when safeguarding is mentioned, the immediate thought is about child protection – when a child is suffering harm, or is in danger of suffering harm. However, safeguarding is much more complex than this and encompasses a very wide range of areas. At Bredbury St Marks we ensure that all of our staff are well trained in all aspects of safeguarding and this training is regularly updated and frequently revisited throughout the year. We also ensure that our curriculum provides the children with age-appropriate opportunities to learn how to keep themselves healthy and safe



## Attendance

Although not always a safeguarding concern, poor attendance at school can impact your child in lots of ways. Children who do not attend school regularly are more likely to:

- Fall behind in their school work
- Find it difficult to make and keep friends
- Be unhappy at school

Poor punctuality also has a negative impact:

- Being frequently late adds up to lost learning
- When children are late they find it harder to settle in to the routine of the day
- they often miss key messages and teaching which continues to have an effect on their learning for the rest of the lesson or day
- Poor punctuality disrupts the class and is embarrassing for the child
- Your child being late disturbs the learning of the whole class

Getting here on time every day really is important in helping your child to become a happy and successful learner. Every day really does count.

8:35 SCHOOL GATE OPENS  
8:45 CLASS DOOR OPENS  
8:50 REGISTER IS TAKEN  
AFTER 8:50 IS LATE



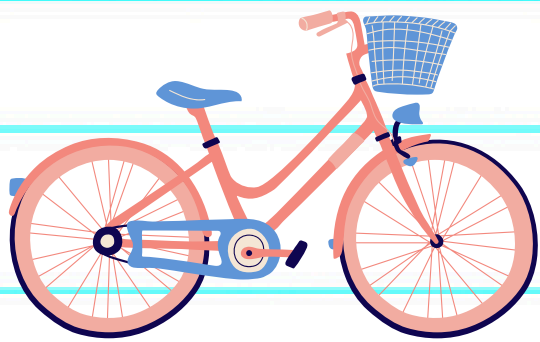
# Autumn !



As the dark nights draw in there are things you can do to help your child stay safe on the journey to and from school.

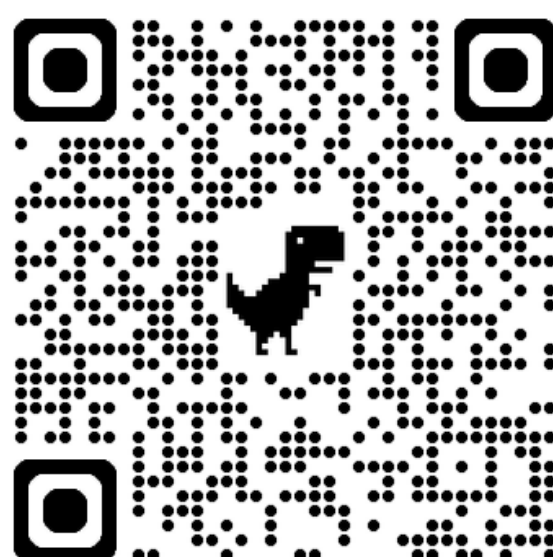
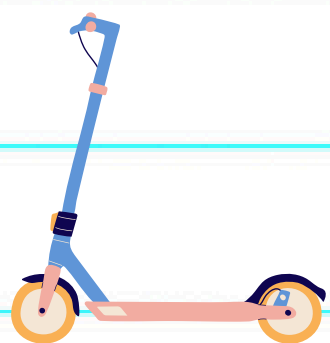
**Be safe .....Be seen !**

Dark coloured coats can make it difficult to spot your child in the dark. Consider using reflective strips on your child's clothing and school bag



If your child rides a bike or scooter to school. Ensure that they have the correct lights attached and that your child is wearing a helmet .

Parents can get some great tips from the be safe be seen web page - **Click on the link below**



If you have any safeguarding concerns about any of our children or your own child, please don't hesitate to contact Mrs Quinn  
Tel : 07518296834